

FERRARA & TUSCANA



Ferrara

This three-bedroom, two-and-a-half bath plan features a Great Room with an optional two-story stone fireplace, a secondary dining or game area, an optional circular turret extending from the entry to the second-story loft and a Master Suite with his and hers walk-in closets.

- 3 Bedrooms
- 2.5 Bathrooms
- Formal Dining
- 2nd Story Loft (Optional Circular Turret)
- Balcony Available
- Covered Patio

2045 total sq. ft.

Tuscana

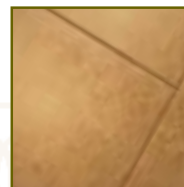
This three-bedroom, two-bath plan is designed for complete one-level living. Enjoy a large Master Suite and, if desired, exchange the third bedroom for a den or family room.

- 3 Bedrooms
- 2 Bathrooms
- Den/Family Room Option
- Formal Dining

1301 total sq. ft.



www.tuscanhillsstgeorge.com
1163 W. Province Way • St. George, UT 84770



Main floor and upper floor plans on reverse side.

Ferrara & Tuscana | FLOOR PLANS



Ferrara Main Level Floor Plan ▲

Tuscana Main Level Floor Plan ▲



Ferrara Upper Level Floor Plan ▲



Optional Tuscana Main Level Floor Plan ▲

Pictures shown are artist's rendering. Actual floor plans and features many vary.