

2346
Square feet



Elevation A

- 4 BEDROOMS
- 2.5-3.5 BATHS
- COMPUTER LOFT
- 3 CAR GARAGE
- DEN OPTION
- LARGE LAUNDRY/
HOBBY ROOM



Elevation B

This four-bedroom, two-and-a-half bath home features twelve-foot ceilings in the Living Room and Great Room and fifteen-foot ceilings in the Entry. A second-story Computer Loft looks down over the Great Room with dramatic impact. The three-car garage and impressive curb appeal are also standard.

Tuscan Hills

www.tuscanhillsstgeorge.com
1163 W. Province Way • St. George, UT 84770

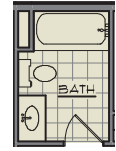
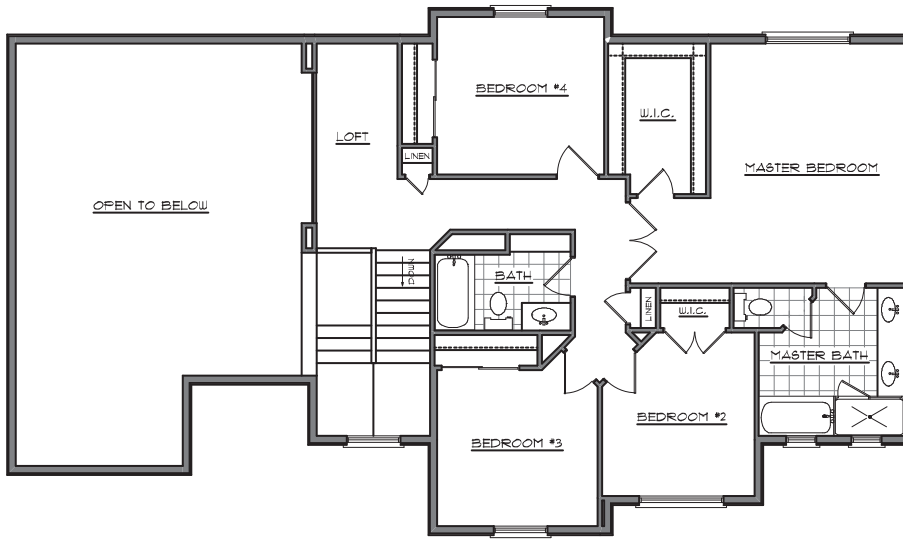
Floor plans on reverse side.

Pictures shown are artist's rendering. Actual floor plans, elevations and features may vary.

Copyright 2007 Haskell Homes all rights reserved.

PORTERINO

2346
Square feet

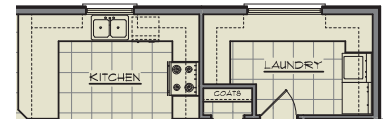
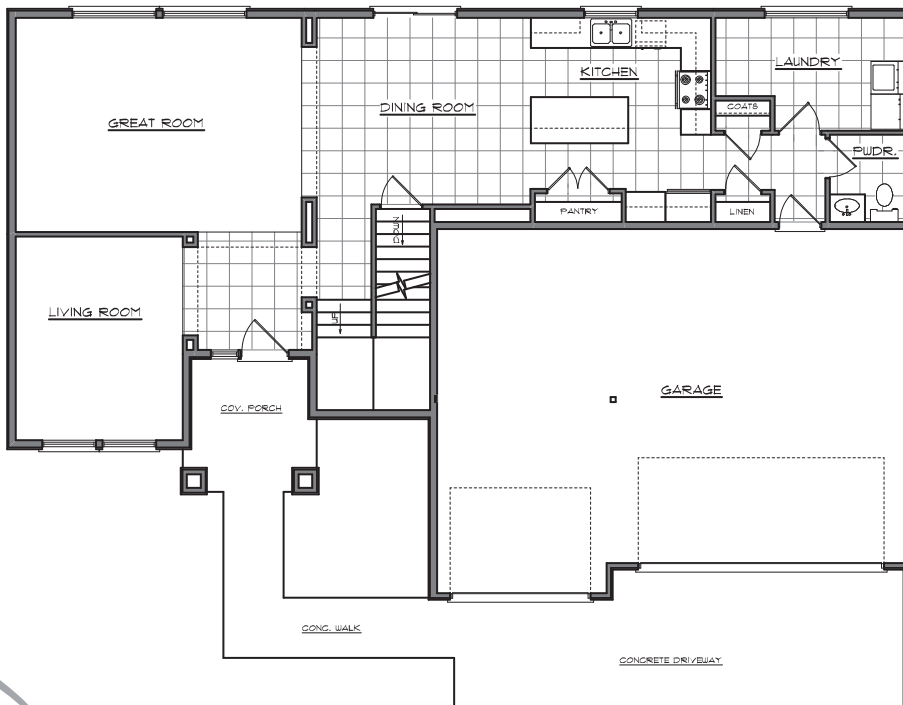


Loft option

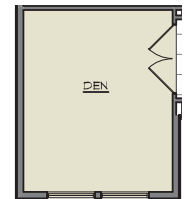
PORTIFINO (UPPER)

1,120 S.Q. FT.

Plan Variations
Highlighted



Kitchen/Laundry option



Living Room option

PORTIFINO (MAIN)

1,226 S.Q. FT.

Tuscan Hills

PORTIFINO