

1803  
Square feet



Elevation A



Elevation B

- 3 BEDROOMS
- 2 BATHS
- COVERED PATIO
- LUXURY MASTER SUITE
- GOURMET KITCHEN
- COURTYARD FIREPLACE OPTION
- 3<sup>RD</sup> GARAGE OPTION

This three-bedroom, two-bath home Features a luxurious Master Suite, Gourmet Kitchen and huge Great Room, all with access to a Covered Patio. The interaction between indoor and outdoor living is further enhanced by a front Courtyard with an optional fireplace and access to the main hall and secondary bedrooms through a covered breezeway.



Elevation C

*Tuscan Hills*

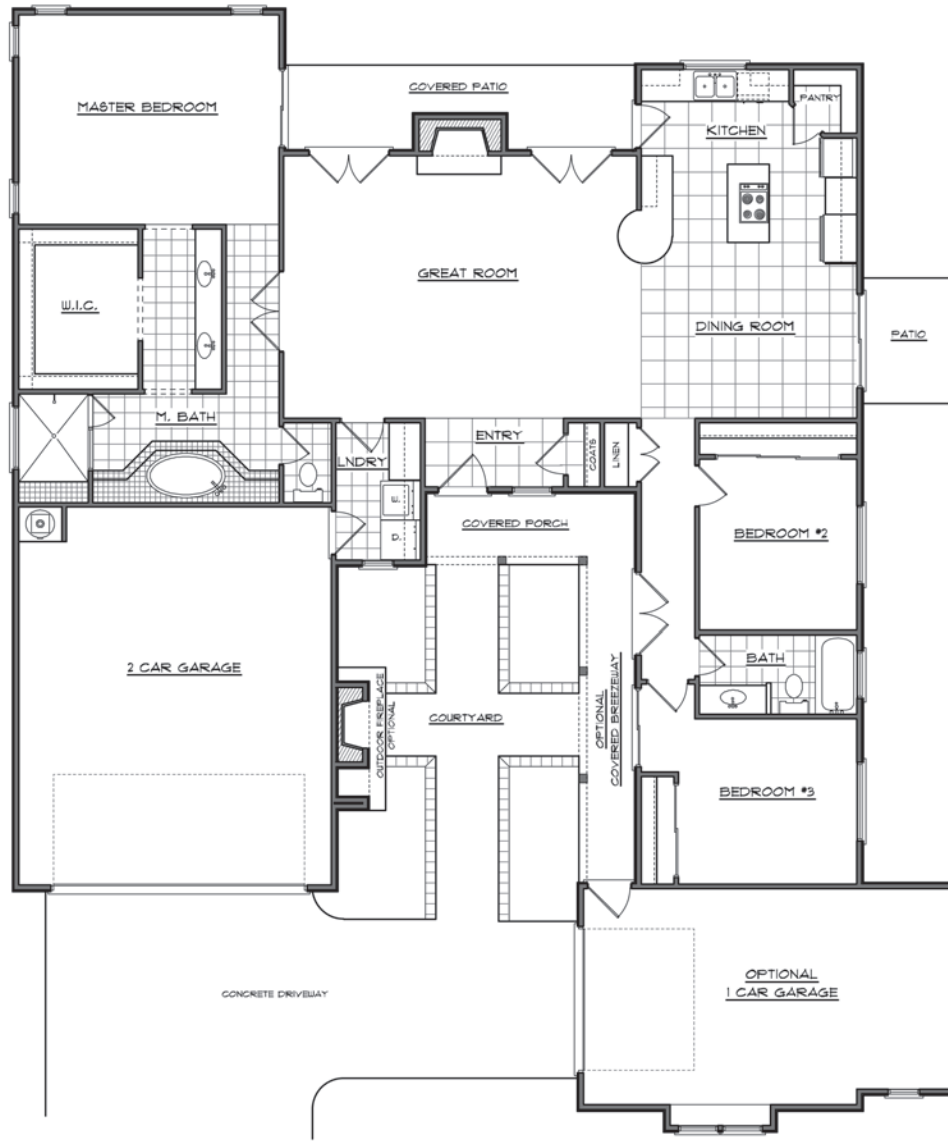
www.tuscanhillsstgeorge.com  
1163 W. Province Way • St. George, UT 84770

*Floor plans on reverse side.*

TORINO

1803  
Square feet

Tuscan Hills



TORINO